

J. HARVEST & FROST
CORPORATE SHIRTMAKER



J. HARVEST & FROST

C O R P O R A T E S H I R T M A K E R







H
J F
&



PASSION



DEDICATION



HARD WORK



CURIOSITY







J.HARVEST & FROST


J.HARVEST & FROST is all about fine workwear. We create the clothing to take you from the office to the dinner party in the same day – making you look and feel at your best.


We are constantly seeking new performances and reinventions. Our dedication and passion result in high quality fabrics, perfect cut and the luxurious feeling you will experience when wearing a piece of our collection.


THE J.HARVEST & FROST CONCEPT DIVISIONS



BLACK BOW – our top of the line collection. Full featured, true classic shirts with state of the art Nano treatment against spills, prepressed sleeves and Never Iron treatment.


GREEN BOW – our classic collection. Here you find our single color products. Timeless classics that will never go out of style.


RED BOW – our classic collection with a twist. Our well-worked shirts with contrast details to suit different situations.


PURPLE BOW – our trend collection. Here you find our latest, most fashionable products. This collection is always changing to meet the needs for fashion today and tomorrow.


INDIGO BOW – Our indigo bow line is all about washed and worn. It is the worker's shirt that is already worked in. Enjoy our Tribute to Leisure.


YELLOW BOW – Yellow bow is our roll-up-your-sleeves-and-get-to-work shirts. Solid colored classical shirts with modern tailored details. Enjoy our Tribute to hard work.

In our mission to make you look and feel sharp and smart; we also offer high end blazers, coats and accessories. J.Harvest & Frost at your service.

MAKING THE FINER WEAR WORK





BLACK BOW	4
GREEN BOW	11
RED BOW	13
PURPLE BOW	21
INDIGO BOW	32
YELLOW BOW	40
BLAZERS	46
COATS	50
ACCESSORIES	56

THE BRAND J. HARVEST & FROST

The brand J. Harvest & Frost was created with passion as the driving force. Passion to create something really good at affordable prices. A natural target image was the knowledge to make really good products that we wanted to use ourselves. We wanted to combine well-designed and elaborate garments for workwear and leisure.

Inspiration came from many sources, such as U.S. advertising agencies, leaders of Norwegian oil business and Swedish merchants. A lot of inspiration from the earlier half of the 20th century. We've studied books, brands and designers sharing our passion for the subject, good at what we want to accomplish. They have all been under our magnifying glass and received a thorough examination.

J. Harvest & Frost has been formed through the collaboration between two brands – James Harvest Sportswear and Frost. James Harvest Sportswear with its roots in U.S. college fashion and a worldwide distribution and Frost with a heritage from the tailored, well-cut garments in a small scale. Two excellent foundations brought together in one concept.

The aim of this brand is to offer well-made, detailed and affordable products of the highest quality. Some details of our garments are only found on much more expensive products.

To succeed in our mission, we need to have the best tailors/seamstresses, the best materials, the best details, the best commitment and the best customers. Good enough is not a term that we use when it comes to our products. The best part is our ambition. Passion drives us.

In order to fulfil our ambition, we try to keep updated on available materials, the best stitches/techniques, what's happening in the industry and what we can do better.

Our goal is to give you the feeling of getting something extra when you come across a garment from J. Harvest & Frost. If your feeling is comparable to getting a very special gift we are near our goal. You shall be totally satisfied – that's it. End of story.

One challenge is still unsolved – the body shapes. Some are thin and some are strong. Some have long arms, and some have short. Our ambition is models for everyone. In most cases our garments fit from the start but for some body shapes garments need to be adjusted to fit perfectly.

J. Harvest & Frost is well-made, detailed and affordable.

In the brand J. Harvest & Frost you will find all our soul and all our heart.



PASSION



DEDICATION



HARD WORK



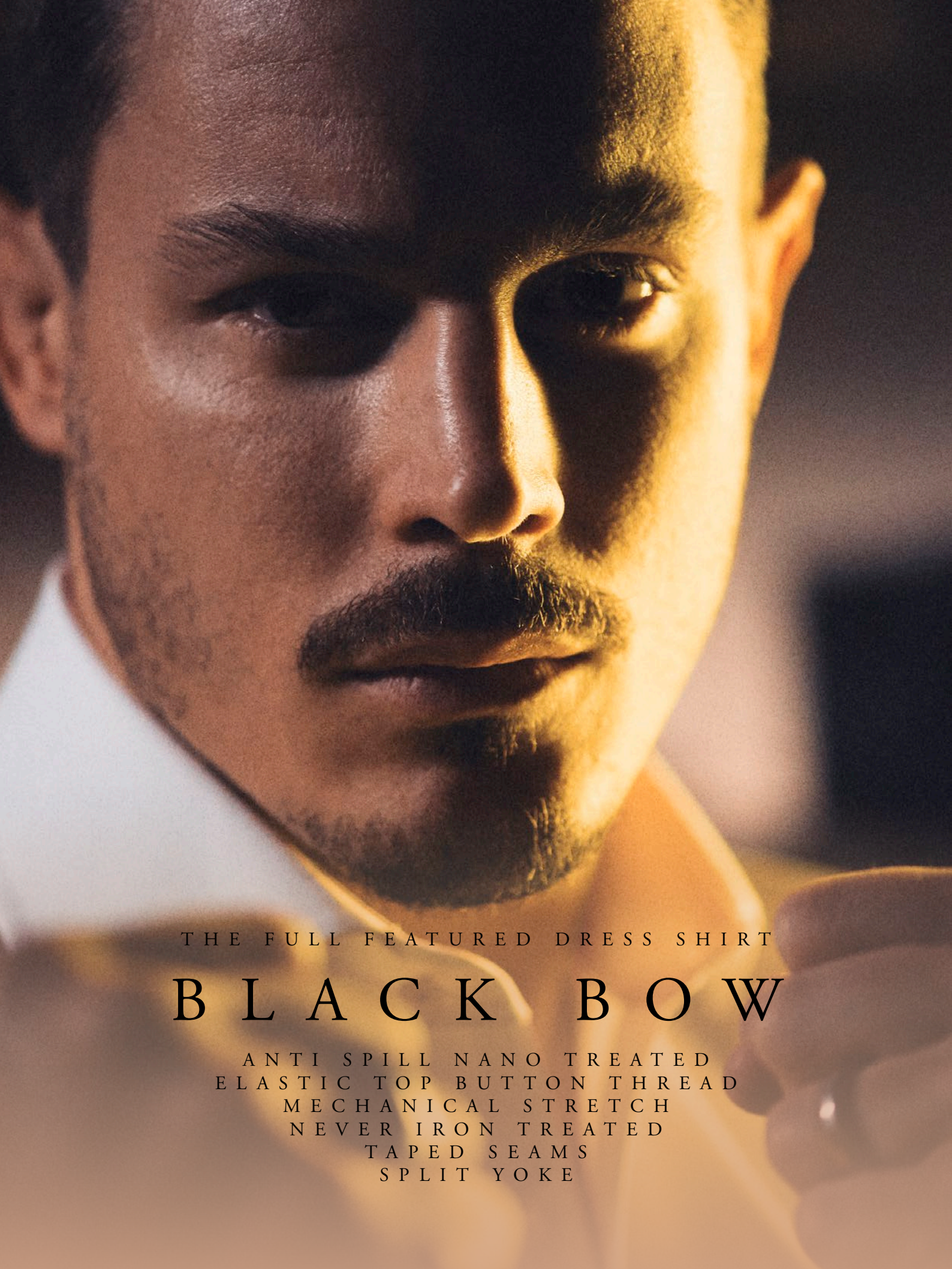
CURIOSITY



J. HARVEST & FROST
CORPORATE SHIRTMAKER

BBB

J.HARVEST&FROST/BLACK BOW



THE FULL FEATURED DRESS SHIRT

BLACK BOW

ANTI SPILL NANO TREATED
ELASTIC TOP BUTTON THREAD
MECHANICAL STRETCH
NEVER IRON TREATED
TAPED SEAMS
SPLIT YOKE









J.HARVEST & FROST

Black Bow 60

Black Bow is set out to be the world's best working shirt.

We created a modern multifunction shirt using only the finest luxurious cotton. It took us years of testing, failing and progressing. It is a challenge to combine all functions at this high-end quality fabric level.

BLACK BOW 60



REGULAR
2906001
S-5XL



SLIM FIT
2906002
S-XXL



WOMAN
2906003
XS-4XL



100 WHITE

500 SKY BLUE

- BLACK BOW LINE.
- NEVER IRON.
- NANO TECHNOLOGY. WATER, OIL AND STAIN REPELLENT.
- SOLID COLOR. 100% LONG STAPLE COMPACT COTTON WITH MECHANICAL STRETCH. MACHINE WASHABLE.
- SPLIT BACK YOKE ENSURES SMOOTH CONTOURED SHOULDERS AND A GREATER RANGE OF MOTION.
- TAPED MAIN-SEAMS HELP THE SHIRT LOOK SHARP, WASH AFTER WASH. NO WRINKLES.
- MODERN CUT-AWAY COLLAR.
- ELASTIC TOP BUTTON THREAD.
- LONG SLEEVE. ROUND EDGE -CUFF. EXTRA BUTTONHOLE FOR CUFF LINKS.
- CURVED HEM.

RECOMMENDED PRICE: 103,95 €





REGULAR
2900101
S-5XL



SLIM FIT
2900102
S-XXL



WOMAN
2900103
XS-4XL

GREEN BOW 01



Nothing beats the clean look of a solid dress shirt. But even at a solid color there are still some features that make our shirt stand out from the crowd. The shirt is crafted in our favorite high performance twill texture. This gives the perfect sheen to it, results in a substantial good hand feeling and makes it less transparent than similar white dress shirts. A split yoke in back, medium cut-away collar and a 35 mm raised placket set the edge for this sharp, but classic shirt.

- GREEN BOW LINE.
- SOLID COLORS. 100% COTTON, MACHINE WASHABLE. NON-IRON PATENTED ENVIRONMENTAL TREATMENT. LONG STAPLE 2-PLY COMPACT COTTON FOR THE BEST POSSIBLE RESULT.
- SPLIT BACK YOKE ENSURES SMOOTH CONTOURED SHOULDERS, AND A GREATER RANGE OF MOTION.

- TAPED MAIN-SEAMS HELP THE SHIRT LOOK SHARP AND NEAT WASH AFTER WASH. NO WRINKLES.
- SEMI CUT-AWAY COLLAR.
- LONG SLEEVE. SINGLE ANGEL-CUFF, WITH EXTRA BUTTONHOLE FOR CUFF LINKS.
- TALL, 4 MM-THICK BUTTONS FOR A SUBSTANTIAL AND MODERN FEELING.
- CURVED HEM.

RECOMMENDED PRICE: 73,95 €





REGULAR
2902001
S-4XL



SLIM FIT
2902002
S-XXL



WOMAN
2902003
XS-4XL

RED BOW
20



1066 WHITE/NAVY
109 WHITE/BLACK
5066 SKY BLUE/NAVY
605 NAVY/SKY BLUE
904 BLACK/RED



Through the Red bow line we reinvent the classic shirt. By adding sophisticated colors and details we made it more modern and smart, but still kept it a classy business shirt.

The shirt is crafted in our favorite high performance twill texture. This gives the perfect sheen to it, results in a substantial good hand feeling and makes it less transparent than similar dress shirts.

- RED BOW LINE.
- SOLID COLOR. 100% COTTON, MACHINE WASHABLE. NON-IRON PATENTED ENVIRONMENTAL TREATMENT. LONG STAPLE 2-PLY COMPACT COTTON.
- SPLIT BACK YOKE ENSURES SMOOTH CONTOURED SHOULDERS, AND A GREATER RANGE OF MOTION.
- TAPED MAIN-SEAMS HELP THE SHIRT LOOK SHARP AND NEAT WASH AFTER WASH. NO WRINKLES.

- SEMI CUT-AWAY COLLAR.
- LONG SLEEVE. SINGLE ANGEL-CUFF, WITH EXTRA BUTTONHOLE FOR CUFF LINKS.
- TALL, 4 MM-THICK BUTTONS FOR A SUBSTANTIAL, MODERN LOOK.
- CURVED HEM.

RECOMMENDED PRICE: **83,95 €**





REGULAR
2902201
S-4XL



SLIM FIT
2902202
S-XXL



WOMAN
2902203
XS-4XL

RED
BOW
22



501 SKY BLUE
STRIPE



601 NAVY
STRIPE



901 BLACK
STRIPE

The Bengal striped shirt will never go out of style; it's a never ending story.

Our model is crafted in the finest twill fabric, designed to bring out the vibrant rich colors of the stripes. Sophisticated contrast fabric, semi cut-away collar, flat front placket and a split yoke at back, are just some other details making it the stylish business classic it is.

- **RED BOW LINE.**
- **STRIPED. 100% COTTON, MACHINE WASHABLE. NON-IRON PATENTED ENVIRONMENTAL TREATMENT. LONG STAPLE 2-PLY COMPACT COTTON FOR THE BEST POSSIBLE RESULT.**
- **SPLIT BACK YOKE ENSURES SMOOTH CONTOURED SHOULDERS, AND A GREATER RANGE OF MOTION.**

- **TAPED MAIN-SEAMS HELP THE SHIRT LOOK SHARP AND NEAT WASH AFTER WASH. NO WRINKLES.**
- **SEMI CUT-AWAY COLLAR.**
- **LONG SLEEVE. SINGLE ANGEL-CUFF, WITH EXTRA BUTTONHOLE FOR CUFF LINKS.**
- **TALL, 4 MM-THICK BUTTONS FOR A SUBSTANTIAL, MODERN LOOK.**
- **CURVED HEM.**

RECOMMENDED PRICE: **83,95 €**





REGULAR
2902401
S-4XL



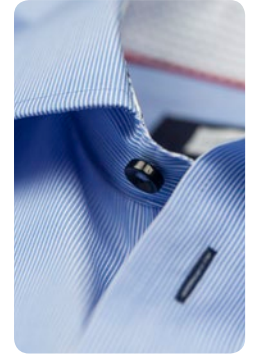
SLIM FIT
2902402
S-XXL



WOMAN
2902403
XS-4XL

RED
BOW

24



951 GREY
STRIPE



551 MIDDLE
BLUE
STRIPE



White thin stripes on a blue or grey anthracite base, makes it a stylish new version of the classic striped shirt. The shirt can perfectly match with all colors and patterns, and is an excellent choice if you should add some colors to your standard white & skyblue wardrobe.

The shirt is crafted in a crisp and sharp poplin weave. Ideal for the fine striped pattern.

We added modern contrast details together with standard features like semi cut away collar, flat front, angle cuff and a split yoke in the back. The shirt is well-designed to take you from the office to the dinner party in one day.

- RED BOW LINE.
- STRIPED POPLIN WEAVE. 100% COTTON, MACHINE WASHABLE. NON-IRON PATENTED ENVIRONMENTAL TREATMENT. LONG STAPLE 2-PLY COMPACT COTTON FOR THE BEST POSSIBLE RESULT.
- SPLIT YOKE ENSURES SMOOTH CONTOURED SHOULDERS, AND A GREATER RANGE OF MOTION.

- TAPED MAIN-SEAMS HELP THE SHIRT LOOK SHARP AND NEAT WASH AFTER WASH. NO WRINKLES.
- SEMI CUT-AWAY COLLAR.
- LONG SLEEVE. SINGLE ANGEL-CUFF, WITH EXTRA BUTTONHOLE FOR CUFF LINKS.
- TALL, 4 MM-THICK BUTTONS GIVE A SUBSTANTIAL AND MODERN FEELING.
- FLAT FRONTPLACKET AND CURVED HEM

RECOMMENDED PRICE: **83,95 €**





REGULAR
2902901
S-4XL



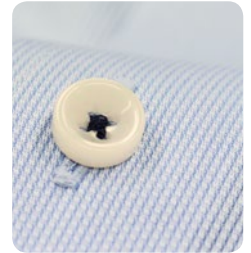
SLIM FIT
2902902
S-XXL



WOMAN
2902903
XS-4XL

RED BOW

29



100 WHITE



500 SKY BLUE

The Bedford micro-cord structure in solid color gives the shirt class, and are well recommended for either business or a bit less formal occasions. The fabric is well known for us, and is aiming to be one of our top 3 classics.

This time we added our new natural mechanical stretch performance to it. It allows the fabric to hold top grade non-iron performance, and adds greater movement with up to 12 % stretch the weft way.

The typical Redbow line-shirt. Classical, yet detailed, giving the shirt a modern sophisticated look.

- RED BOW LINE.
- SOLID COLOR, MICRO-CORD BEDFORD STRUCTURE.
- MECHANICAL STRETCH. 100% COTTON,. MACHINE WASHABLE. NON-IRON PATENTED ENVIRONMENTAL TREATMENT. LONG STAPLE 2-PLY COMPACT COTTON FOR THE BEST POSSIBLE RESULT.
- SPLIT BACK YOKE ENSURES SMOOTH CONTOURED SHOULDERS, AND A GREATER RANGE OF MOTION.

- TAPED MAIN-SEAMS HELP THE SHIRT LOOK SHARP AND NEAT WASH AFTER WASH. NO WRINKLES.
- SEMI CUT AWAY COLLAR.
- LONG SLEEVE. SINGLE ANGEL-CUFF, WITH EXTRA BUTTONHOLE FOR CUFF LINKS.
- TALL, 4 MM-THICK BUTTONS GIVE A SUBSTANTIAL AND MODERN FEELING.
- CURVED HEM.

RECOMMENDED PRICE: **83,95 €**





REGULAR
2904001
S-4XL



SLIM FIT
2904002
S-XXL



WOMAN
2904003
XS-4XL

PURPLE BOW
40



106 WHITE



506 SKY BLUE



A classic Oxford shirt is every wardrobe's essential. And our edition is lively detailed to make the most of it.

This sleek sport shirt features sophisticated contrast colors, soft button down collar, raised placket, split yoke in back and a stylish chest pocket. Team it up with a regimental tie, and get the perfect preppy college look.

- PURPLE BOW LINE.
- SOLID. 100% COTTON, MACHINE WASHABLE. NON-IRON PATENTED ENVIRONMENTAL TREATMENT. LONG STAPLE 2-PLY COMPACT COTTON FOR THE BEST POSSIBLE RESULT.
- SPLIT BACK YOKE ENSURES SMOOTH CONTOURED SHOULDERS, AND A GREATER RANGE OF MOTION.
- SOFT BUTTON DOWN COLLAR, WITH A THIRD BUTTON AT THE BACK OF THE COLLAR.

- TAPED MAIN-SEAMS HELP THE SHIRT LOOK SHARP AND NEAT WASH AFTER WASH. NO WRINKLES.
- PIPED CHEST POCKET ON MENS STYLE.
- LONG SLEEVE. SINGLE ANGEL-CUFF, WITH EXTRA BUTTONHOLE FOR CUFF LINKS.
- ROUND CLASSIC BUTTONS FOR A SPORTY LOOK.
- RAISED PLACKET AND CURVED HEM

RECOMMENDED PRICE: **93,95 €**





REGULAR
2904101
S-4XL



SLIM FIT
2904102
S-XXL



WOMAN
2904103
XS-4XL

PURPLE
BOW

41



601 NAVY
CHECK



501 SKY BLUE
CHECK



A Gingham check shirt is a classic that every man should have in his rotation. Our modern version is crafted of finest twill texture, with taped main seams and non-iron patented treatment. With this shirt's impeccable performance it works perfectly at the office, as well as for sporty leisure.

Other features such as sophisticated contrast colors, soft button down collar, split yoke in back, and a stylish chest pocket help reinvent this old classic.

- PURPLE BOW LINE.
- GINGHAM CHECK. 100% COTTON, MACHINE WASHABLE. NON-IRON PATENTED ENVIRONMENTAL TREATMENT. LONG STAPLE 2-PLY COMPACT COTTON FOR THE BEST POSSIBLE RESULT.
- SPLIT BACK YOKE ENSURES SMOOTH CONTOURED SHOULDERS, AND A GREATER RANGE OF MOTION.
- TAPED MAIN-SEAMS HELP THE SHIRT LOOK SHARP AND NEAT WASH AFTER WASH. NO WRINKLES.
- SOFT BUTTON DOWN COLLAR, WITH A THIRD BUTTON AT THE BACK.
- PIPED CHEST POCKET ON MENS STYLE.
- LONG SLEEVE. SINGLE ANGEL-CUFF. EXTRA CUFF LINKS HOLE.
- TALL, 4 MM-THICK BUTTONS FOR A SUBSTANTIAL AND MODERN FEELING.
- CURVED HEM

RECOMMENDED PRICE: 93,95 €





REGULAR
2904801
S-4XL



SLIM FIT
2904802
S-XXL



WOMAN
2904803
XS-4XL

PURPLE
BOW

48



566 SKY BLUE

A double 100's jacquard fabric, with a nice modern micro-pattern. Combine it with the full suit or a more relaxed look with jeans. Either way it will serve you well.

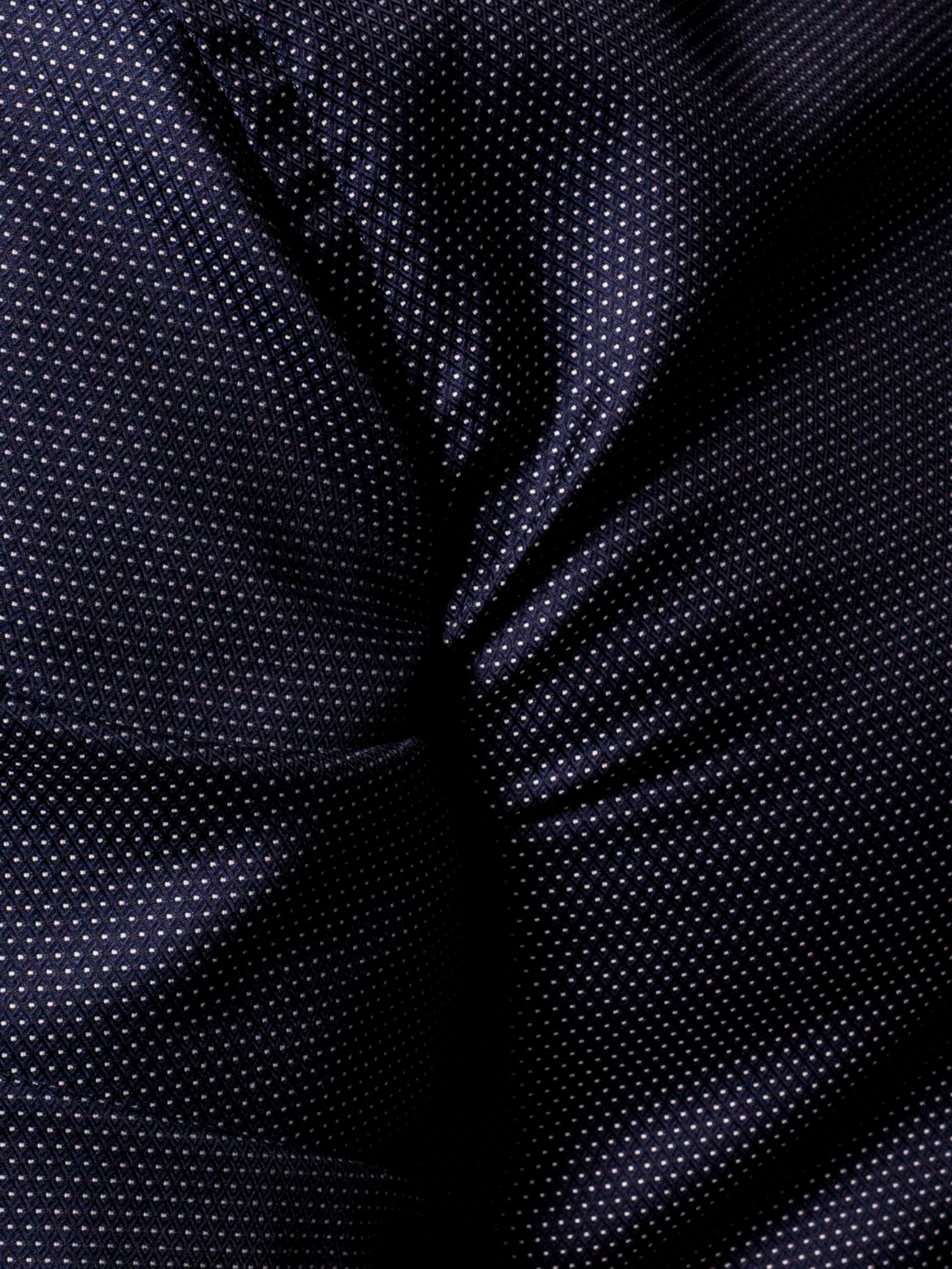
Our newly developed fabric is made with a mechanical stretch for better comfort.

The mechanical stretch is a new innovative way of giving comfort to a 100% natural long stapled, compact cotton fabric. It will give natural elasticity to the shirt of up to 12% stretch the weft way, and still keep our great NON-IRON performance.

This is innovative shirt-making at its best, and we enjoy taking part of it.

- PURPLE BOW LINE.
- BLUE TONED JACQUARD FABRIC, WOVEN IN A FINE MICRO-PATTERN.
- FABRIC QUALITY - 100% LONG STAPLED COMPACT COTTON- DOUBLE 100'S. WITH NEW AND INNOVATIVE MECHANICAL STRETCH.
- MACHINE WASHABLE. NON-IRON PATENTED ENVIRONMENTAL TREATMENT.
- SPLIT BACK YOKE ENSURES SMOOTH CONTOURED SHOULDERS, AND A GREATER RANGE OF MOTION.
- TAPED MAIN-SEAMS HELP THE SHIRT LOOK SHARP AND NEAT WASH AFTER WASH. NO WRINKLES.
- MODERN CUTAWAY COLLAR WITH A SOFT INTERLINING AND HIDDEN BUTTON DOWN.
- LONG SLEEVE. SOFT ROUND EDGE -CUFF, WITH EXTRA BUTTONHOLE FOR CUFF LINKS.
- PEARL-LIKE BUTTONS, FOR A LUXURIOUS LOOK.
- CURVED HEM.

RECOMMENDED PRICE: 93,95 €





REGULAR
2904901
S-4XL



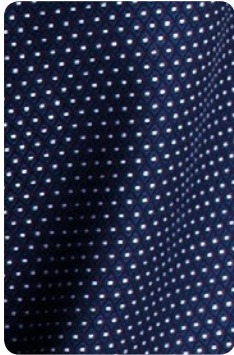
SLIM FIT
2904902
S-XXL



WOMAN
2904903
XS-4XL

PURPLE
BOW

49



601 NAVY

A double 100's jacquard fabric, woven with white dots on navy background for a modern and sophisticated look. Combine it with the full suit or with jeans. Either way it will serve you well.

Our newly developed fabric is made with a mechanical stretch for better comfort. The mechanical stretch is a new innovative way of giving comfort to a 100% natural long stapled, compact cotton fabric. It will give natural elasticity to the shirt of up to 12% stretch the weft way, and still keep our great NON-IRON performance.

This is innovative shirt-making at its best, and we enjoy taking part of it.

- PURPLE BOW LINE.
- NAVY JACQUARD FABRIC, WOVEN WITH WHITE MICRO DOTS
- FABRIC QUALITY - 100% LONG STAPLED COMPACT COTTON- DOUBLE 100'S. WITH NEW AND INNOVATIVE MECHANICAL STRETCH
- MACHINE WASHABLE. NON-IRON PATENTED ENVIRONMENTAL TREATMENT.
- SPLIT BACK YOKE ENSURES SMOOTH CONTOURED SHOULDERS, AND A GREATER RANGE OF MOTION

- TAPED MAIN-SEAMS HELP THE SHIRT LOOK SHARP AND NEAT WASH AFTER WASH. NO WRINKLES
- MODERN CUTAWAY COLLAR WITH A SOFT INTERLINING AND HIDDEN BUTTON DOWN.
- LONG SLEEVE. SOFT ROUND EDGE -CUFF, WITH EXTRA BUTTONHOLE FOR CUFF LINKS
- PEARL-LIKE BUTTONS, FOR A LUXURIOUS LOOK
- CURVED HEM.

RECOMMENDED PRICE: **93,95 €**





REGULAR
2914001
S-4XL



SLIM FIT
2914002
S-XXL



WOMAN
2914003
XS-4XL

PURPLE
BOW
140



556 SKY BLUE

A fine striped skyblue light-weight double 100's jacquard fabric, woven with white dots for a modern and sophisticated look.

Combine it with the full suit or with jeans. Either way it will serve you well.

Our newly developed fabric is made with a mechanical stretch for better comfort. The mechanical stretch is a new innovative way of giving comfort to a 100% natural long stapled, compact cotton fabric. It will give natural elasticity to the shirt of up to 12% stretch the weft way, and still keep our great NON-IRON performance.

This is innovative shirt-making at its best, and we enjoy taking part of it.

- PURPLE BOW LINE.
- BLUE TONED JAQUARD FABRIC, WOVEN IN A FINE MICRO-PATTERN.
- FABRIC QUALITY - 100% LONG STAPLED COMPACT COTTON- DOUBLE 100'S. WITH NEW AND INNOVATIVE MECHANICAL STRETCH.
- MACHINE WASHABLE. NON-IRON PATENTED ENVIRONMENTAL TREATMENT.
- SPLIT BACK YOKE ENSURES SMOOTH CONTOURED SHOULDERS, AND A GREATER RANGE OF MOTION.

- TAPED MAIN-SEAMS HELP THE SHIRT LOOK SHARP AND NEAT WASH AFTER WASH. NO WRINKLES.
- MODERN CUTAWAY COLLAR WITH A SOFT INTERLINING AND HIDDEN BUTTON DOWN.
- LONG SLEEVE. SOFT ROUND EDGE -CUFF, WITH EXTRA BUTTONHOLE FOR CUFF LINKS.
- PEARL-LIKE BUTTONS, FOR A LUXURIOUS LOOK.
- CURVED HEM.

RECOMMENDED PRICE: **93,95 €**





REGULAR
2914101
S-4XL



SLIM FIT
2914102
S-XXL



WOMAN
2914103
XS-4XL

PURPLE
BOW
141



4-way stretch fabric with NON IRON treatment is another new and innovative performance made by us. With a 360 degree stretch ability, the shirt is as comfortable as a woven dress-shirt can get. It works with you in your every movement.

The shirt is crafted in light-weight soft hand-touched poplin. With versatile Mini-checks, this shirt suits all looks from the office to the less formal occasions.

- PURPLE BOW LINE.
- POPLIN WEAVE, MINI-CHECKS PATTERN.
- 4 -WAY STRETCH. NON IRON 90% COTTON,10%SPANDEX. MACHINE WASHABLE.
- NON-IRON PATENTED ENVIRONMENTAL TREATMENT. LONG STAPLE 2-PLY COMPACT COTTON FOR THE BEST POSSIBLE RESULT.
- SPLIT BACK YOKE ENSURES SMOOTH CONTOURED SHOULDERS, AND A GREATER RANGE OF MOTION.

- TAPED MAIN-SEAMS HELP THE SHIRT LOOK SHARP AND NEAT WASH AFTER WASH. NO WRINKLES.
- MODERN CUT-AWAY COLLAR.WITH HIDDEN BUTTON DOWN.
- LONG SLEEVE. ROUND EDGE -CUFF, WITH EXTRA BUTTONHOLE FOR CUFF LINKS.
- CLASSIC, 2,5 MM-THICK BUTTONS,WITH PEARL IMITATION,FOR A LUXURIOUS LOOK
- CURVED HEM.

RECOMMENDED PRICE: **93,95 €**





REGULAR
2903001
S-4XL



SLIM FIT
2903002
S-XXL



WOMAN
2903003
XS-4XL

INDIGO
BOW

30

900 BLACK

100 WHITE

450 PINK

500 SKY BLUE



Our indigo bow oxford shirt is crafted of carefully selected fabric and finishing that gives the right soft and worn feeling. It is a worker-shirt that is already «worked-in».

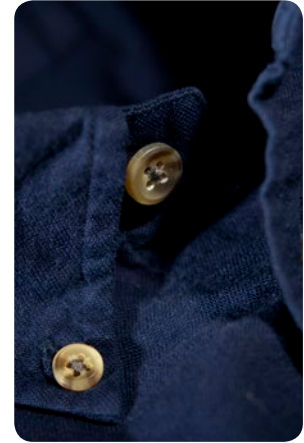
- INDIGO BOW LINE.
- SOLID COLOR, 100 % COTTON. OXFORD WEAVE, DURABLE WASH- PEACHED SURFACE.
- FABRIC WEIGHT 160 GRAM/M².
- MACHINE WASHABLE.
- BUTTON DOWN COLLAR.

- SPLIT YOKE, ENSURES SMOOTH CONTOURED SHOULDERS. AND A GREATER RANGE OF MOTION.
- CHEST POCKET ON MENS STYLE.
- LONG SLEEVE.
- ROUND EDGE BARREL CUFF.
- NATURAL WHITE BUTTONS.

RECOMMENDED PRICE: 73,95 €

INDIGO
BOW

31

REGULAR
2903101
S-4XLSLIM FIT
2903102
S-XXLWOMAN
2903103
XS-4XL

605 NAVY

Our classic heavy oxford reveals itself in this deep rich indigo blue color, combined with brown horn buttons.

The 40/1 x 20/2 construction gives it the right amount of beefiness; and we already soften it up for you. The more you wear it, the more personality the shirt will have.

- INDIGO BOW LINE.
- SOLID COLOR, 100 % COTTON. OXFORD WEAVE, DURABLE WASH- PEACHED SURFACE.
- WEIGHT 160 GRAM.
- MACHINE WASHABLE.
- SPLIT YOKE, ENSURES SMOOTH CONTOURED

- SHOULDERS. AND A GREATER RANGE OF MOTION.
- BUTTON DOWN COLLAR.
- CHEST POCKET ON MENS STYLE.
- LONG SLEEVE.
- ROUND EDGE BARREL CUFF.
- BROWN HORN BUTTONS.

RECOMMENDED PRICE: 73,95 €



REGULAR
2903201
S-4XL



SLIM FIT
2903202
S-XXL



WOMAN
2903203
XS-4XL

INDIGO
BOW

32



501 SKYBLUE STRIPE

The blue and white university stripe oxford is as iconic as it gets – kind of preppy and old school, yet forever in style. A typical oxford that works well dressed up or down.

- INDIGO BOW LINE.
- CLASSIC STRIPED PATTERN, 100 % COTTON. OXFORD WEAVE, DURABLE WASH- PEACHED SURFACE.
- WEIGHT 160 GRAM.
- MACHINE WASHABLE.
- SPLIT YOKE, ENSURES SMOOTH CONTOURED SHOULDERS. AND A GREATER RANGE OF MOTION.
- BUTTON DOWN COLLAR.
- CHEST POCKET ON MENS STYLE.
- LONG SLEEVE.
- ROUND EDGE BARREL CUFF.
- NATURAL WHITE BUTTONS.

RECOMMENDED PRICE: 73,95 €





REGULAR
2903301
S-4XL



SLIM FIT
2903302
S-XXL



WOMAN
2903303
XS-4XL

INDIGO BOW
33



100 WHITE



410 RED



310 ORANGE



710 GREEN



510 SKY BLUE

Summer in a shirt. Tropical colors, authentic, characteristic wrinkling texture, casual, refined, vacation. All words describing our classical airy open weaved 100% linen shirt. The only shirt that deserves to be wrinkled and looks better this way.

The shirt ages with beauty and only improves over time.

So grab your gear, and get ready for summer.

- INDIGO BOW LINE.
- PLAIN WEAVE, SOLID 2 TONE COLOR.
- 100% LINEN.
- SUPERSOFT GARMENT WASH.
- MACHINE WASHABLE
- SPLIT BACK YOKE ENSURES SMOOTH CONTOURED SHOULDERS, AND A GREATER RANGE OF MOTION.

- SMALL CUT-AWAY COLLAR.LIGHTWEIGHT INTERLINING. FOR SOFT TOUCH.
- LONG SLEEVE. SOFT ROUND EDGE -CUFF EXTRA BUTTONHOLE FOR CUFF LINKS.
- CLASSIC, 2,5 MM-THICK BUTTONS.
- CURVED HEM.

RECOMMENDED PRICE: **83,95 €**





REGULAR
2903401
S-4XL

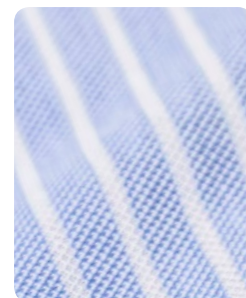


SLIM FIT
2903402
S-XXL



WOMAN
2903403
XS-4XL

INDIGO
BOW
34



100 WHITE



500 SKY BLUE



550 SKY BLUE STRIPE



It has the look of a classic woven dress shirt, but is in fact a knitted shirt. Combining the best of two worlds. This is the world's most comfortable good looking dress shirt. Feels like a t-shirt, styled like a Wall Street Wolf.

We makes this happen using high-end double 60 compact yarn, and a soft treatment. This gives the shirt a luxurious look and silky touch. Also, using high quality yarn in a knitted fabric, gives you a natural non-iron performance. Wash it, hang dry and wear. Simple.

We are confident in this new and innovative way of making fine-shirts. We look forward to develop more colors and patterns to the knitted program. Enjoy!

- INDIGO BOW LINE.
- KNITTED, 100% COMPACT-COTTON. SOFT TREATMENT. MACHINE WASHABLE
- SPLIT BACK YOKE ENSURES SMOOTH CONTOURED SHOULDERS, AND A GREATER RANGE OF MOTION

- MODERN CUT-AWAY COLLAR WITH HIDDEN BUTTON DOWN.
- LONG SLEEVE. SOFT ROUND EDGE -CUFF EXTRA BUTTONHOLE FOR CUFF LINKS.
- CLASSIC, 2,5 MM-THICK BUTTONS, WITH PEARL IMITATION, FOR A LUXURIOUS LOOK.
- CURVED HEM.

RECOMMENDED PRICE: **83,95 €**

J. HARVEST & FROST

YELLOW BOW

The best
bartending
cab driving
traveling shirt.
working
waitering
studying



These shirts are made for workin'

We knew we had to prioritize and make some hard choices. Some things were essential; the performance, style, taped seams, split yoke and the tall buttons: We had to keep the great cut from our existing shirts. Other features could be tweaked.

The material was changed to a fine, blended cotton polyester twill with a nice hand feel and a superb, patented environmental easy iron performance. We added the short sleeve option and corporate colours in the palette. Let us present you with a high performance shirt that takes you to work and back home with style. In our opinion the world's best middle price range shirt for the workplace.

Enjoy your hard work.▶◀



YELLOW BOW 50
LONG SLEEVE
REGULAR FIT
S-5XL
2905001

YELLOW BOW 50
LONG SLEEVE
SLIM FIT
S-XXL
2905002

YELLOW BOW 50
LONG SLEEVE
WOMAN
XS-4XL
2905003

YELLOW BOW 50
SHORT SLEEVE
REGULAR FIT
S-5XL
2905011

YELLOW BOW 50
SHORT SLEEVE
SLIM FIT
S-XXL
2905022

YELLOW BOW 50

Yellow bow is our roll-up-your-sleeves-and-get-to-work shirts. It's a solid colored classical shirt with modern tailored details. This high performance shirt is made in in our favorite fine blended twill with an added unique Easy Care treatment. Enjoy your hard work.



100 WHITE

500 SKY BLUE

600 NAVY

900 BLACK

- YELLOW BOW LINE.
- FABRIC- ØKOTEX 100 CERTIFIED. SOLID COLOR, 60% COTTON / 40% POLYESTER FINE TWILL FABRIC. MACHINE WASHABLE.
- SPECIAL ENVIRONMENTAL EASYCARE TREATMENT.
A Unique finishing that gives the fabric
- HIGH WRINKLE FREE RATING.
- LUXORIOUS AND SOFT HANDFEELING.
- QUICK DRY .
- SPLIT BACK YOKE ENSURES SMOOTH CONTOURED SHOULDERS, AND A GREATER RANGE OF MOTION.
- TAPED MAIN-SEAMS HELP THE SHIRT LOOK SHARP AND NEAT WASH AFTER WASH. NO WRINKLES.
- SEMI CUT-AWAY COLLAR.
- LONG SLEEVE. SINGLE ANGEL-CUFF, WITH EXTRA BUTTONHOLE FOR CUFF LINKS. / SHORT SLEEVE OPTION.
- TALL, 4 MM-THICK BUTTONS FOR A SUBSTANTIAL AND MODERN FEELING.
- CURVED HEM.

RECOMMENDED PRICE: **41,95 €**



YELLOW
BOW

50

Harvest Frost
 Enjoy your hard work.
 for the workplace
 Probably the best middle price range shirt.
 Harvest Frost
 Yellow Bow





YELLOW BOW 51
REGULAR FIT
S-5XL
2905101

YELLOW BOW 51
SLIM FIT
S-XXL
2905102

YELLOW BOW 51
WOMAN
XS-4XL
2905103

YELLOW BOW 51

Yellow bow is our roll-up-your-sleeves-and-get-working shirts. It's a solid colored shirt with modern trimmings & tailored details. This high performance shirt is made in in our favorite fine blended twill with an added unique Easy Care treatment. Enjoy your hard work.



105 WHITE / SKY BLUE

505 SKY BLUE / NAVY

555 ROYAL/NAVY

955 GREY/BLACK

905 BLACK



- YELLOW BOW LINE.
- FABRIC- ØKOTEX 100 CERTIFIED. SOLID COLOR, 60% COTTON / 40% POLYESTER FINE TWILL FABRIC. MACHINE WASHABLE.
- SPECIAL ENVIRONMENTAL EASYCARE TREATMENT.
A Unique finishing that gives the fabric
- HIGH WRINKLE FREE RATING.
- LUXURIUS AND SOFT HANDFEELING.
- QUICK DRY.
- SPLIT BACK YOKE ENSURES SMOOTH CONTOURED SHOULDERS, AND A GREATER RANGE OF MOTION.
- TAPED MAIN-SEAMS HELP THE SHIRT LOOK SHARP AND NEAT WASH AFTER WASH. NO WRINKLES.
- SEMI CUT-AWAY COLLAR.
- LONG SLEEVE. SINGLE ANGEL-CUFF, WITH EXTRA BUTTONHOLE FOR CUFF LINKS.
- TALL, 4 MM-THICK BUTTONS FOR A SUBSTANTIAL AND MODERN FEELING.
- CURVED HEM.

RECOMMENDED PRICE: **51,95 €**



YELLOW
BOW

51

for the workplace
Enjoy your hard work.
Probably the best middle price range shirt
Harvest & Frost
Yellow Bow





J.HARVEST & FROST

CLASSIC BLAZER



600 NAVY



980 DARK GREY



900 BLACK



MAN
2960001
46-62



WOMAN
2960003
32-48

Classic blazer in a 280 gram smooth fabric. The material is carefully chosen. A mix of 70% wool, 27% polyester and 3% stretch, sets the blazer up to be a perfect working blazer. Stretch for your comfort and the blended quality for less wrinkles. Fold it gently into your suitcase and it is ready to wear when you arrive. Again, no wrinkles.

The blazer has nice and stylish color contrasts at the right spots. Show them or keep it as the modern classic it is. We call it the classic with a twist.

Other powerful features are; colorful interior, horn buttons, kissing buttons at sleeve (only for men), Turn up interior in the chest pocket to use as handkerchief.

- 70% WOOL, 27 % POLYESTER + 3 % STRETCH. 280 GRAM FABRIC.
- TURN UP INTERIOR INSIDE CHEST POCKET TO USE AS HANDKERCHIEF.
- TWO-BUTTON CLOSURE.
- DOUBLE VENTED BACK HEM FOR MAN BLAZER – NO VENTS FOR WOMAN BLAZER.
- WELT POCKET AT CHEST AND 2 WELTPOCKETS WITH FLAPS IN WAIST.

- SLEEVES WITH 4 KISSING BUTTONS + CONTRASTING THREAD AT THE 4TH BUTTON (ONLY MAN).
- CONTRAST FELT-TIE FABRIC BACK OF LAPEL.
- REGULAR FIT (BETWEEN SLIM AND REGULAR) FOR BOTH MAN & WOMAN.
- FULLY LINED. SOLID LINING IN BODY + CHECKED LINING IN SLEEVE.
- 4 INSIDE POCKETS (ONLY MAN).

RECOMMENDED PRICE: **224,95 €**



J.HARVEST & FROST

CLUB BLAZER



600 NAVY



MAN
2961001
46-62



WOMAN
2961003
32-48

Navy blazer in a 380 grams heavy structured fabric. The material is carefully chosen. A mix of 70% wool, 27% polyester & 3% stretch, sets the blazer up to be a perfect working blazer. Stretch for your comfort and the mixed quality for less wrinkles. Fold it gently into your suitcase and it is ready to wear when you arrive. Again, no wrinkles.

The blazer has nice and stylish color contrasts at the right spots. Show them or keep it as the modern classic it is. We call it the classic with a twist.

Other powerful features are; colorful interior, AMF stitching and horn buttons. The gentlemen also get kissing buttons at sleeves, free handkerchief and a matching button in placket, while the ladies hold their own with a micro bowtie brouche.

- 70% WOOL, 27 % POLYESTER + 3 % STRETCH. 380 GR/M² FABRIC.
- COLOR. NAVY BLUE.
- TWO- BUTTON CLOSURE.
- DOUBLE VENTED BACK HEM FOR MAN BLAZER- NO VENTS FOR WOMAN BLAZER.
- TWO PATCH POCKETS IN WAIST, AND PATCH CHEST POCKET.
- AMF STITCHING AT SHOULDER, LAPEL AND POCKETS.
- SLEEVES WITH 4 KISSING BUTTONS WITH RED CONTRASTING THREAD AT THE 4TH BUTTON (MAN).

- CONTRAST FELT+ TIE FABRIC AT BACK OF LAPEL.
- REGULAR FIT. (BETWEEN SLIM AND REGULAR.) FOR BOTH MAN & WOMAN.
- FULLY LINED. NAVY CHECK LINING IN BODY + SOLID COLOR NAVY LINING IN SLEEVE.
- 4 INSIDE POCKETS (MAN).
- HANDKERCHIEF IN CHEST FOR MEN BLAZER & MICRO BOWTIE-BROCHE IN LAPEL FOR WOMAN.

RECOMMENDED PRICE: **224,95 €**



J.HARVEST & FROST

**TECHNICAL
CAR COAT**

900 BLACK



MAN
2990001
S-XXXL



WOMAN
2990003
XS-XXL



360° STRETCH



MVP: 10.000



WP: 10.000



PRIMALOFT®

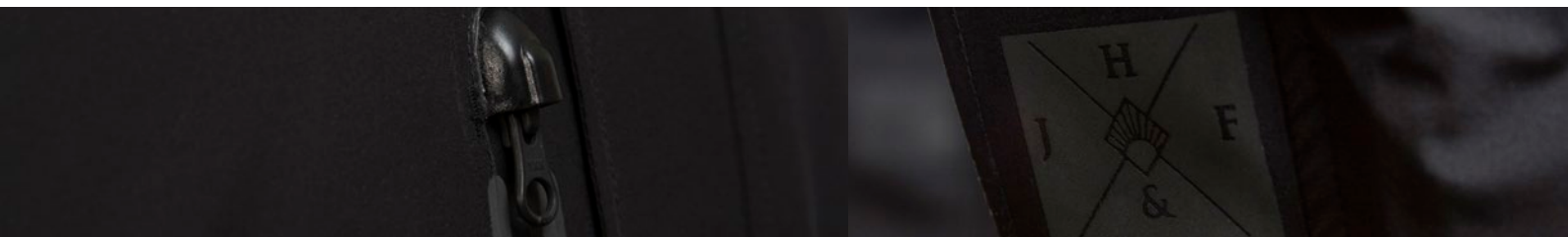
This is an exceptional light, comfortable and nice fitted $\frac{3}{4}$ length city-jacket. Suits any situation or weather condition, either it is on the way to a business meeting, or a late night stroll in the park.

The main Technical features are 360 degree stretch, thin Primaloft-Silver insulation, water and wind proof. This highly technical, extreme lightweight car-coat is perfect for usage in the -5°C To +15°C temperature range.

- **BLACK COLOR**
- **EXCEPTIONAL LIGHTWEIGHT 600G.**
- **OUTERSHELL - 87% POLYAMIDE- 13% ELESTAN.**
- **360 DEGREE STRETCH**
- **INSULATION- PRIMALOFT SILVER- 60 G.**
- **10 000 MM. WATER PROOFED.**
- **10 000 G. BREATHABILITY.**
- **DWR COATED WATER REPELLENCY.**

- **TWO WAY YKK ZIPPER IN FRONT PLACKET.**
- **WATER PROOF YKK ZIPPERS AT SIDES + CHEST POCKET.**
- **REFLECTIVE VISIBILITY DETAILS AT FRONT AND BACK FOR SAFETY.**
- **MAGNET LOCKING AT PLACKET, SPLIT & INSIDE POCKET.**

RECOMMENDED PRICE: **299,95 €**





J.HARVEST & FROST

**TECHNICAL
PARKA**

900 BLACK



MAN
2990201
S-XXXL



WOMAN
2990203
XS-XXL



360° STRETCH



MVP: 10.000



WP: 10.000



PRIMALOFT®

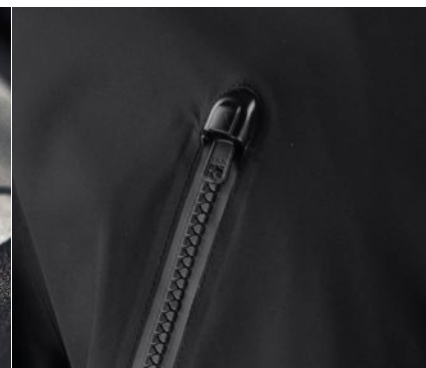
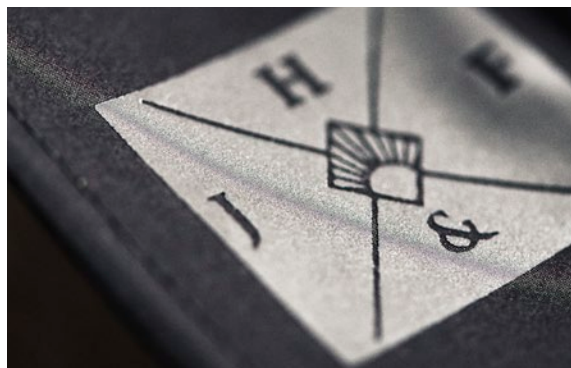
The popularity of our Technical City Coat, and the good test reports, made it necessary to make a hooded version. And so the parka was born.

With the same technical performances as our city coat, but with the bold attitude of the urban parka. Outside front pockets, long sloping tail in the back and straight fit. Providing you with the right feeling of style, luxury and versatility in any given day or occasion. Any way you want to wear it.

The main technical features are 360 degree stretch, thin Primaloft-Silver insulation, water and wind proof. This highly technical, extreme lightweight parka is perfect for usage in the -15°C to +15°C temperature range.

- **BLACK COLOUR**
- **EXCEPTIONAL LIGHTWEIGHT 800G.**
- **OUTER SHELL: 87% POLYAMIDE, 13% ELASTANE.**
- **360 DEGREE STRETCH**
- **INSULATION (PRIMALOFT SILVER) 80 G.**
- **10 000 MM. WATER PROOFED.**
- **10 000 G. BREATHABILITY.**
- **DWR COATED WATER REPELLENT.**

- **TWO WAY YKK ZIPPER IN FRONT PLACKET.**
- **WATER PROOF YKK ZIPPERS AT CHEST POCKET**
- **REFLECTIVE VISIBILITY DETAILS AT FRONT, BACK AND HOOD FOR SAFETY.**
- **4 OUTSIDE POCKETS. FRONT: 2 BIG EXTERNAL POCKETS WITH FLAP COVER AND MAGNET LOCK, CHEST: 2 ZIPPED POCKETS**
- **MAGNET LOCK AT PLACKET + SIDE POCKETS.**

RECOMMENDED PRICE: **349,95 €**



J.HARVEST & FROST

HYBRID WOOL COAT



MAN
2990101
S-XXXL



WOMAN
2990103
XS-XXL



900 BLACK

We call it the Hybrid, as it is a mix of a typical A a classical wool coat and a zipped up technical jacket. We were inspired to create something different yet elegant, that had our name on it.

It has a modern stand collar, concealed front closure, chest pocket and impeccable stitching.

Well-fitted with a $\frac{3}{4}$ length, Perfect to be worn for work over a formal jacket but still a nice length for your everyday leisure adventures.

- 60%WOOL, 25%POLYESTER, 10%VISCOSE, 5%LYCRA.
- COLOR -BLACK
- HIDDEN TWO WAY YKK ZIPPER IN FRONT PLACKET.
- WATER PROOF YKK ZIPPERS IN SIDE+ CHEST POCKET.
- MAGNET CLOSING IN TOP COLLAR+ BACK SPLIT.
- REFLECTIVE VISIBILITY DETAILS AT FRONT AND BACK FOR SAFETY

RECOMMENDED PRICE: **299,95 €**



DOCUMENT
FOLDER
2950200
ONE SIZE

900 BLACK



RECOMMENDED PRICE: **114,95 €**

J.HARVEST & FROST

DOCUMENT FOLDER

Document folder with a stylish combination of leather and felt. Our beloved J.Harvest & Frost logo are embossed nicely in the leather in the front, between 2 leather straps. They are for the convenience open, so you can place your daily newspaper there when on the run.

The inside of the folder has lining in felt and multiple open pockets. It also shows some nice contrast color of royal blue felt behind the pocket, to give it a the extra twist.

- LEATHER HANDLE AT TOP
- METAL ZIPPER WITH LEATHER ZIP PULLER.
- MULTIPLE UTILITY POCKETS
- IPAD DEPARTMENT.
- BUSINESS CARD HOLDER.
- SIZE: 36 X 27 X 6CM. VOLUME: 3.5 L.

J.HARVEST & FROST

BRIEFCASE

BRIEFCASE
2950100
ONE SIZE

900 BLACK



RECOMMENDED PRICE: **224,95 €**

This full leather briefcase is designed with multiple utility pockets and an adjustable leather shoulder strap. Our beloved J.Harvest & Frost logo are embossed in front.

Distinguished features like open straps in side for newspaper or umbrella, and a removable organizer made of braided elastic bands for all your gadgets. The inside is made with lining in grey felt, computer department, and a zip pocket at the side with contrast color felt as a nice colorful detail.

- TWO LEATHER TOP HANDLES AND DETACHABLE LEATHER SHOULDER STRAP.
- LEATHER PROPRIETOR TAG.
- OPEN STRAPS IN SIDES FOR NEWSPAPER OR UMBRELLA.
- FEATURE METALLIC ZIPS WITH LEATHER ZIP PULLERS
- REMOVABLE GADGET ORGANIZER – BRAIDED ELASTIC BANDS.
- POCKET FOR LAPTOP & ZIPPER POCKET IN SIDE.
- SIZE: 41.5 X 29.5 X 9CM. VOLUME: 9.5L.

J.HARVEST & FROST

WEEKEND BAG

WEEKEND BAG
2950000
ONE SIZE

980 GREY



RECOMMENDED PRICE: **224,95 €**

Your perfect travel companion crafted of durable high density cotton canvas combined with details in soft luxury leather. Other nice Features as metal zip fastening at top and detachable shoulder strap. A practical Shoe department with zipper at the side. Brushed silver finish on metal trims. Inside bag is covered in soft striped fabric. Zipped interior pocket with stylish contrasting colored felt.

- GREY CANVAS WITH BLACK LEATHER DETAILS AND TWO LEATHER TOP HANDLES.
- REMOVABLE NYLON SHOULDER STRAP WITH LEATHER DETAILS.
- ZIPPED POCKETS AT OUTSIDE. 1 SHOE DEPARTMENT AND 1 POCKET IN SIDES.
- METALLIC ZIPS WITH LEATHER ZIP PULLERS
- LEATHER PROPRIETOR TAG.
- INTERIOR IS LINED WITH 100% POLY. ZIP POCKET AT THE SIDE WALL IS LINED WITH ROYAL BLUE FELT.
- SHELL: 100 % COTTON CANVAS, HIGH DENSITY 20 OZ. HANDLES, DECORATION STRAPS, REINFORCED CORNERS: 100% LEATHER.
- SIZE: L58.5 X W30.5 X H29CM. VOLUME: 46L.









SOCKS SOLID

2970101
 51% MERINO WOOL,
 48% POLYAMID, 1% LYCRA
 SIZES: 34-36, 37-39, 40-42,
 43-45, 46-48

These Merino Wool socks have elastic knitting at the ankle and arch for a perfect fit all day.

RECOMMENDED PRICE: **11,95 €**



TIE BARS

2940100

We made a selection of 6 colorful tie bars, to complete your smart look. These colorful accessories not only ensure that you look stylish, but it also makes sure that your tie stays in place. Lift the tie up a tad above the bar, and it ensures an elegant tie draping. **RECOMMENDED PRICE: 39,95 €**



CUFF LINKS

2940000

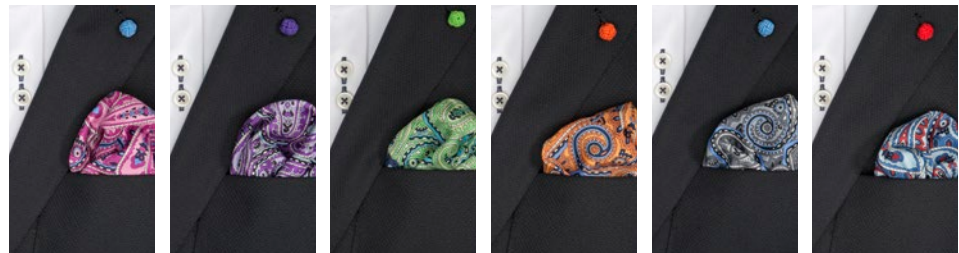
All of our shirts come with an extra buttonhole in the cuff, so if you prefer you can wear a set of our classic double knot on bar cuff links. They are hand-made from soft stretch band, and comes in a big variety of colors.

RECOMMENDED PRICE: **2,65 €**

THE PAISLEY HANDKERCHIEF

2920300
 100% SILK

This handsome pocket squares features a bold paisley pattern with rich colors.



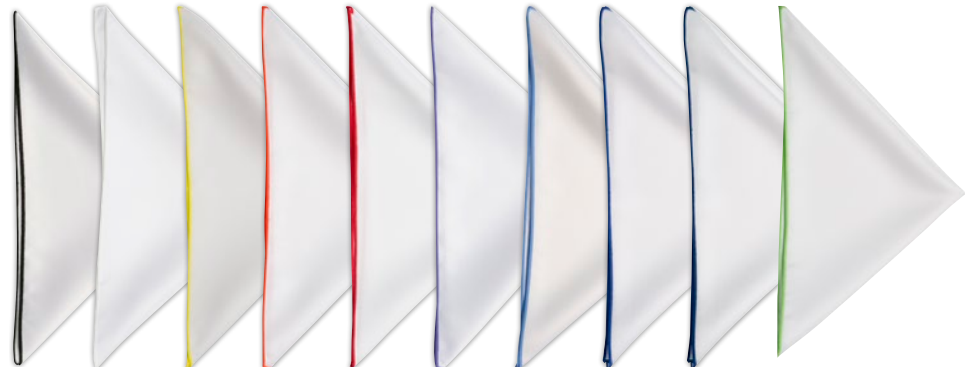
488 PINK 888 PURPLE 788 GREEN 388 ORANGE 988 GREY 588 BLUE

RECOMMENDED PRICE: **7,95 €**

THE WHITE HANDKERCHIEF

2920100
 100% MICROFIBER

We made this clean white hanky's in a big variety of edge-colors. Feel free to match it up with our classic double knot cuff links to suit your occasion with style.



109 BLACK 102 YELLOW 104 RED 105 LIGHT BLUE 106 NAVY
 100 WHITE 103 ORANGE 118 PURPLE 115 BLUE 107 GREEN

RECOMMENDED PRICE: **4,95 €**

BOWTIE

2930000
100% MICROFIBER.
This Bow is self-tied. It is expertly made for the perfect proportions. You can adjust it easily after your neck size

RECOMMENDED PRICE: **9.95 €**



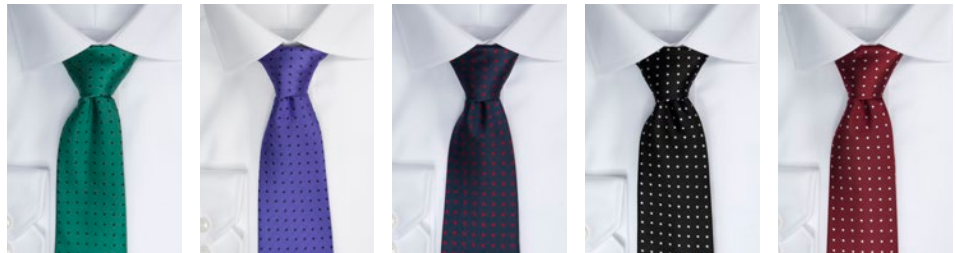
900 BLACK

TIES.

100% MICROFIBER.
All of our ties are carefully crafted of the best interlining to ensure a firm touch and a perfect knot to the tie. We choose to make these ties in microfiber, as we had in mind that it is for hardworking people, and that the use can be a little bit rougher than normal fine dining. Microfiber has the ability to look like luxury natural silk and work like strong artificial fiber.

TIE DOTTED

2910100



706 GREEN/NAVY

806 PURPLE/NAVY

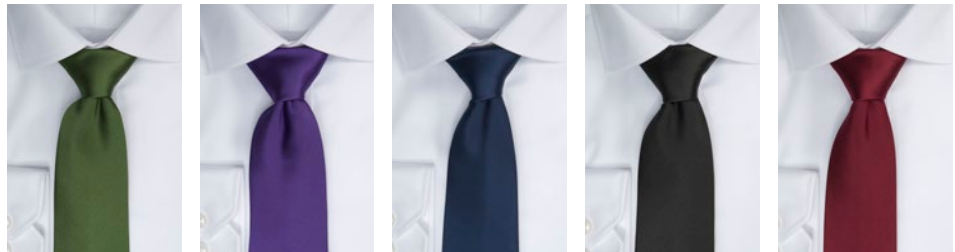
604 NAVY/RED

901 BLACK/WHITE

301 WINE/WHITE

TIE SOLID COLOR

2910000



700 GREEN

800 PURPLE

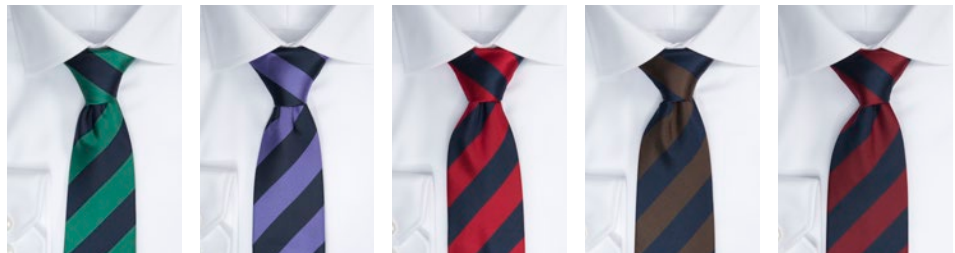
600 NAVY

900 BLACK

300 WINE

TIE REGIMENTAL STRIPE

2910200



607 NAVY/GREEN

608 NAVY/PURPLE

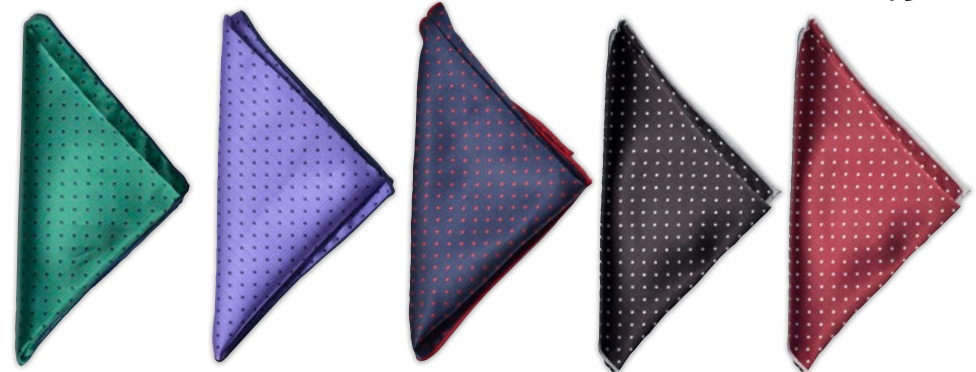
604 NAVY/RED

602 NAVY/BROWN

603 NAVY/WINE

POCKET SQAURE

2920000
100% MICROFIBER.
A perfect selection of colors to mix and match with all of our fine ties. Classical dots mixes perfectly with all patterns. There is a lot of ways to fold the hanky, take a look at our hanky-helper which comes along, for some of them.



706 GREEN/NAVY

806 PURPLE/NAVY

604 NAVY/RED

901 BLACK/WHITE

301 WINE/WHITE

RECOMMENDED PRICE: **11.95 €**

RECOMMENDED PRICE: **4.95 €**

COMMON COTTON
SINGLE YARN 70'
WITHOUT TAPED
SEAMS

J. HARVEST & FR
CORPORATE SHIRTM

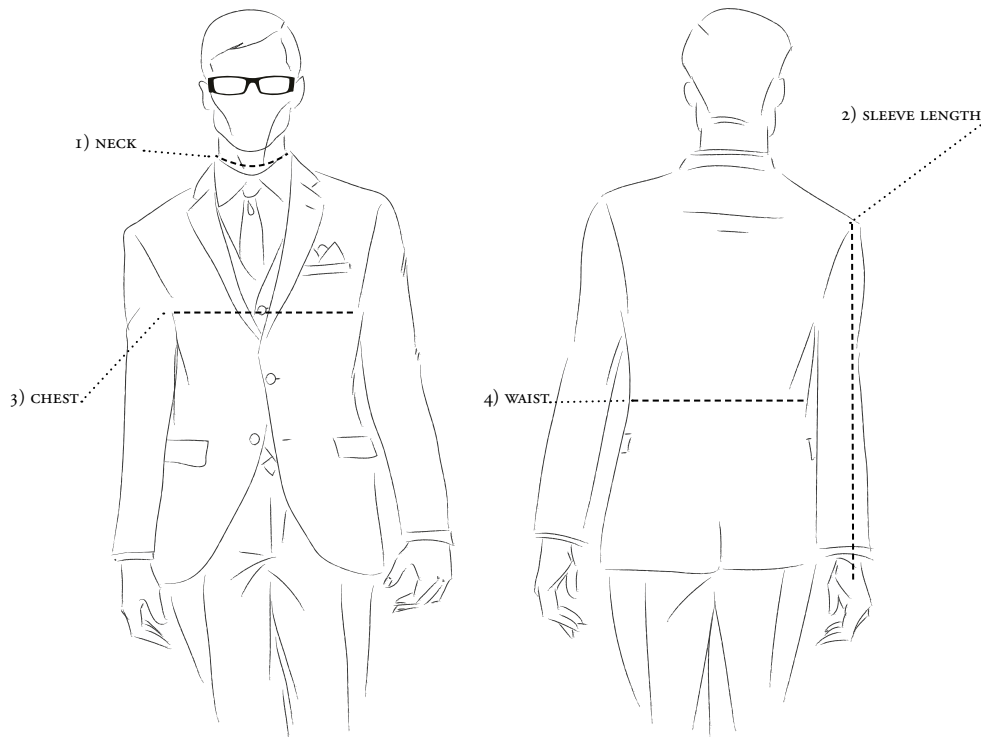




J.H & F NON-IRON
SUPERCOTTON
WITH TAPED
SEAMS

J.H&F Non-Iron Supercotton.

We are really proud of our shirts, and we want to show how great these garments really are. So we made this shirt. On your right is our J.H&F Non-Iron Supercotton with taped seams, the left half is common cotton single yarn 70' without taped seams. We washed it. Hang dried it and folded it neatly. We did not iron any parts of the shirt. As you can tell there is quite some difference. Notice the overall smoothness and pay extra attention to the shoulder seams. The regular fabric is not of poor quality. It's just not... Supercotton.



HOW TO MEASURE YOUR BODY

1) NECK

Place the measuring tape around the neck at the height where the collar would normally rest. This will be just below your Adam's apple. Stand relaxed. Do not crane your neck out or squeeze your chin down. The tape should be resting lightly on the skin, not squeezing it. Hold one finger under the tape measure to ensure some room for comfort.

2) SLEEVE LENGTH

Place one end of the measuring tape at the tip of the shoulder, where you imagine the shoulder seam of the shirt will be. Let your arm hang down at side, and run the measure tape along with it. Measure to the center of the meaty part of your palm. If you don't have a partner, measure a shirt with sleeves that is the right length.

3) CHEST

Run the measuring tape around the fullest part of your chest, tight up under your armpits and over the shoulder blades. Let your arms hang down in a relaxed, natural pose. Do not puff out your chest or arch your back in any sort of pose that isn't natural or sustainable.

4) WAIST

Run the tape around the fullest part of the belly. This is usually around the level of the belly button. The measuring tape should be snug on the skin, but not squeezing in. Let your arms hang down, and stand in a relaxed, natural pose. Do not puff out your stomach or try holding it in.

SIZE MAP

S H I R T S																								
REGULAR	S	M	L	XL	XXL	XXXL	4XL	5XL	SLIM	S	M	L	XL	XXL	WOMAN	XXS	XS	S	M	L	XL	XXL	XXXL	4XL
SIZE	37/38	39/40	41/42	43/44	45/46	47/48	49/50	51/52	SIZE	37/38	39/40	41/42	43/44	45/46	SIZE	32	34	36	38	40	42	44	46	48
NECK	38	40	42	44	46	48	50	52	NECK	38	40	42	44	46	NECK	37	38	39	40	41	42.5	44	46	48
CHEST	106	112	118	124	130	138	146	154	CHEST	100	106	112	118	124	CHEST	86	90	94	98	102	106	110	116	122
WAIST	102	108	114	120	126	134	142	150	WAIST	92	98	104	110	116	WAIST	75	79	83	87	91	95	99	105	111
BACK C. LENGTH*	79	80,5	82	83,5	84	86	88	90	BACK C. LENGTH*	78	79,5	81	82,5	83	BACK C. LENGTH	63	64,5	66	67,5	69	70,5	72	74	76
SLEEVE-LENGTH	65	66	67	68	68	69	69	69	SLEEVE-LENGTH	65	66	67	68	68	SLEEVE-LENGTH	58,5	59,5	60,5	61,5	62,5	63	63,5	64	64

CONVERTER

CENTIMETER NECK	38	40	42	44	46	48	50	52
SIZE	S	M	L	XL	XXL	XXXL	XXXXL	XXXXXL
SIZE	37/38	39/40	41/42	43/44	45/46	47/48	49/50	51/52
INCHES	15	15-3/4	16-1/2	17-1/2	18	19	19-3/4	20-1/2



**ADDITIONAL
SIZE MAPS
joom.ag/RV0a**



M A N										W O M A N									
MAN	46	48	50	52	54	56	58	60	62	WOMAN	32	34	36	38	40	42	44	46	48
CHEST	104	108	112	116	120	124	130	138	146	CHEST	82	86	90	94	98	102	107	112	118
MID WAIST	92	96	100	104	108,5	113	121	131	141	MID WAIST	73	77	81	85	89	93	98	103	109
BACK C. LENGTH	71,5	73,5	75,5	77,5	79,5	80,5	81	81,5	82	BACK C. LENGTH	58	59	60	61	62	63	64	64,5	65
SLEEVE LENGTH	63	64,5	65,5	66,5	67,5	68	68	68,5	68,5	SLEEVE LENGTH	59	60	61	62	63	64	65	65,5	65,5

PRICES ARE VALID TO 01/01/2019, BUT THESE PRICES ARE SUBJECT TO UNILATERAL INCREASES THROUGHOUT THE YEAR (RISING COTTON PRICES, USD/EUR, ETC...). PRICES ARE SUBJECT TO PRINT ERRORS AND FINAL SALE. VAT AND SHIPPING NOT INCLUDED.





J. HARVEST & FROST

C O R P O R A T E S H I R T M A K E R

www.jharvestandfrost.com